

HUATULCO RANGE



WHY HUATULCO?

(Wah~tool~co)

Before re-joining the family business in Pembrokeshire, Castle Hot Tubs General Manager, Yan Koob lived and worked as a diving instructor in the beautiful Huatulco National Park region of Mexico.

Less developed than Mexico's mainstream resorts, Huatulco's bays and coves are home to many stunning scenic beaches. Boasting fine white sand and kissed by the Pacific Ocean in shades from cobalt blue to emerald green.

Inland features stunning lowland jungle scenery, interspersed with waterfalls, ravines and coffee plantations.

Visitors to our showrooms are guaranteed a very warm welcome. We take the time to understand your needs and requirements, ensuring that your choice hot tub proves to be the best investment in your well-being that you ever make!



DELIVERING THE DREAM!

Our hot tubs are affordable to run, being engineered to maximise efficiency and featuring industry leading insulation.

We can help you with the initial outlay on your investment as well. Subject to status, we can offer a range of flexible monthly payment options.

A Buy Now, Pay Later plan with a 0% Interest Option is also available. Our payment plans can help make your dream spa an affordable reality, today.



As South Wales largest independent supplier of hot tubs, we supply a wide range of Hot tubs & Swim spas to suit every budget and requirement, including spa suitable for use in a business setting.

Our friendly and knowledgeable staff are very happy to guide you to the best choice.

We don't do kerbside drop-offs! We deliver, install and set up your hot tub to ensure you can safely enjoy using your new spa from day one!



WE GUARANTEE YOU:

QUALITY

We carefully select industry-leading suppliers with quality materials and components to work with.

ACCREDITATION

We are proud members of BISHTA and fully support their principles of promoting safe water and industry conduct. In addition, **Castle Hot Tubs** are What Spa approved. Check out our reviews at www.reviews.co.uk - you can rest assured that our feedback is vetted and genuine.

PASSION

We fully believe in the benefits of hot tub ownership; we are passionate hot tub professionals and users. Our goal is not to offer you the biggest most expensive hot tub, it is to help and support you find the right hot tub for you and your family.

UNDERSTANDING

We appreciate that a hot tub is a considered purchase. Therefore, we have various purchase options to suit our clients. From outright purchase to our zero deposit 0% interest finance options we have worked hard to make hot tub ownership a reality for as many people as possible.

WHAT MAKES US UNIQUE?

The **Hualtco Range** has been developed and designed in conjunction with our suppliers and our manufacturer. Our goal is to bring you the best quality hot tubs in the market at an affordable price.

Our spas are built by one of the world's largest hot tub manufacturers, at the world's largest hot tub factory in China. The spas undergo a thorough build checklist, but they also are fully tested and inspected in the factory to ensure your spa is built to our highest standards.

American Aristech Acrylic means your hot tub not only looks great but is one of the best available. It's hard wearing, long lasting and helps keep running costs as low as possible when combined with our SpaQuilt insulation, ensuring that your spa is one of the most energy efficient spas on the market today.

The Huatulco hot tub range uses Gecko electronics, one of the best control panels and control boards available. Based in Canada, Gecko are experts at delivering state of the art electronic components and they rigorously test their products in the harsh Canadian climate of up to -40 degrees, to ensure easy operation of your spa. Our superior LX Hydrotherapy pumps deliver the ultimate massage experience, so whether you are looking for a stunning full body massage in our lounge seats, or simply a soothing neck and shoulder massage to relieve tensions and stress, our spas have it all.

ADVANCED SPAQUILT INSULATION



Our Advanced Spaquilt Insulation offers our users one of the most efficient running hot tubs with optimal heat retention in the market. Built for the most extreme of conditions that Wales has to offer. Our Advanced Spaquilt Insulation uses the heat generated from the pumps to keep your hot tub warm, reflecting this heat back into the spa whilst keeping out the colder outer air. This ultimately reduces your running costs so you can sit back and relax for years to come.

ACRYLIC COLOURS

We have a comprehensive range of 3 stunning cutting edge shades of Acrylic for our spas that will fit any setting.



Odyssey



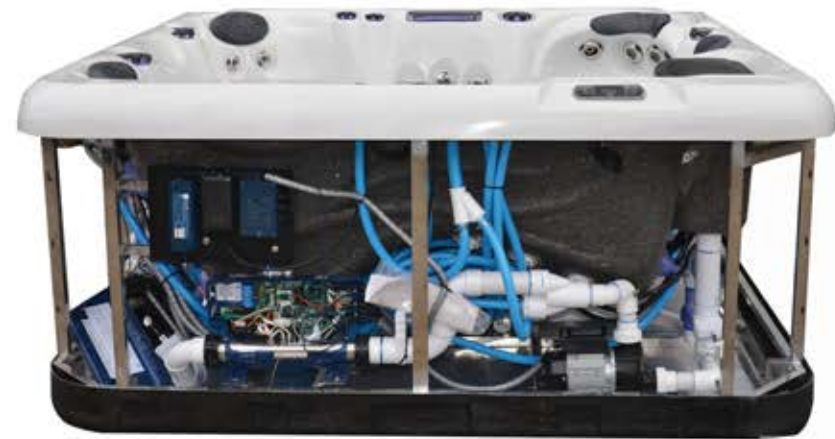
Midnight Canyon



Sterling Silver

BUILD QUALITY

We manufacture our range of spas to be long lasting and also be maintenance free. All of our hot tubs come complete with a stainless steel structure and ABS base. We use American Aristech Acrylic who are the world leader in hot tub acrylics. Internal pipework is also glued and clipped to ensure your spa does not leak and withstands heavy usage. You can have total ease that your new spa comes complete with some of the best components available.



QUALITY ASSURANCE

We provide ourselves on using the best components available when we manufacture our hot tub ranges. From luxury American components to executive hydrotherapy massage pumps and jets.

Unwind in our affordable yet superior hot tub range and begin your journey to ultimate relaxation today.



GECKO IN.TOUCH 2*...

In our world, everything is now connected.

For spa owners who want to connect their spas to the internet, it's easy to get lost in a large clutter of setups and configurations.

Spa owners need a solution coming with the simplest of setups possible. Nobody wants to refer to manuals or call an IT specialist anymore.

in.touch 2 eliminates all the complexities of connecting your spa to the Internet and transforms your smartphone or tablet, into your ultimate mobile remote control. It comes with a state-of-the-art app and 2 pre-paired radio frequency transmitters.

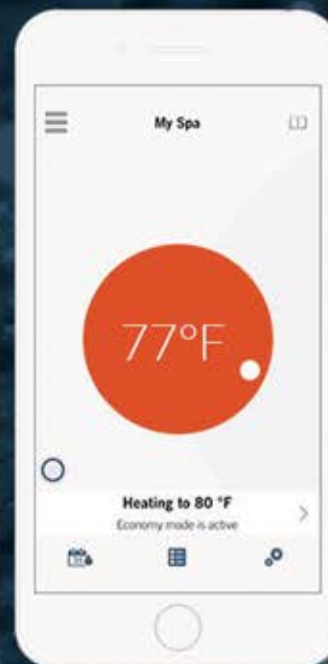
One being part of your spa system and the second one, being connected to your Internet router. Both RF transmitters are pre-linked to one another, enabling an immediate and perfect communication between you and your spa.

Thanks to a strong RF technology, your in.touch 2 is easily connected

Through our proprietary RF technology, in.touch 2 transceivers emit a strong, stable and long-range signal between your spa and your router (about 3 times longer than regular signal). No need for repeaters or boosters: your spa will always remain within reach in typical backyard settings

For iOS and Android users

in.touch 2 streamlined iOS or Android application makes it very easy to control and program functions and features of your spa from your smartphone or your tablet, even when you're away from home. Push notifications will always keep you informed on the status of your spa, even when your app is not open.



***Additional Extra**

RRP **Only £249**

Not included standard.

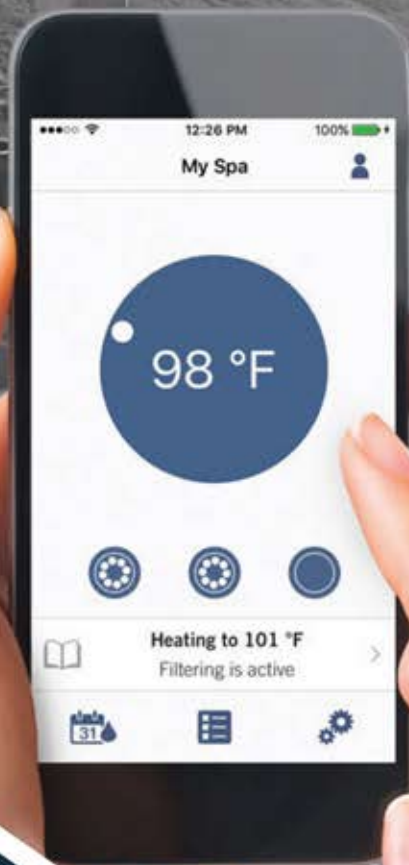
BLUETOOTH SOUND SYSTEM

Streamed From Your Spa – Your Favourite Music Never Sounded So Good!

Our Spas come as standard with Bluetooth amplifier and two built in pop up speakers.

Simply connect your phone/tablet and play your favourite music via our built in Bluetooth amplifier.

Sit Back and enjoy!



in.K500 CONTROL



The Gecko K500 control panel is a versatile control system that enables you to control your spa easily at the touch of a button. With its in built music system you can also control your spa music from your control panel. This comes as standard on all of our hot tub range.



in.ye control systems deliver optimal performance and total control giving spa owners the immediate satisfaction of getting a lot more than what they expected from their spas.

Main functions

Settings key

One press gives you access to a menu to manage the settings of your spa. Refer to the settings section for details about the settings menu.

Main screen

The main screen gives you access to your accessories and water temperature. At the bottom of the screen you will see any error or maintenance messages that are present.

Power

Press any button to turn the keypad on. After 30 minutes without activity it will shut off.

Start or stop accessories

To start or stop an accessory, press the associated button. Icons will become animated when their accessory is turned on, and inanimate when turned off. Icons on the screen will reflect the speed or state of the devices running on your spa.

When an accessory has more than two states, press the button until it reaches the desired state.

Note (version 14.00 and higher): A special buttons and icons mapping may be used when the spa configuration has 4 accessories* (3 pumps and a blower or 4 pumps and no blower). In this case only, buttons and icons are divided in 2 sets of accessories. Button #1 starts or stops pump #1 and pump #2. Button #2 starts or stops Pump #3 and Pump #4/ blower. Corresponding icons will be animated when one or more accessories are on.

* Only Pump #1 can have a dual speed.

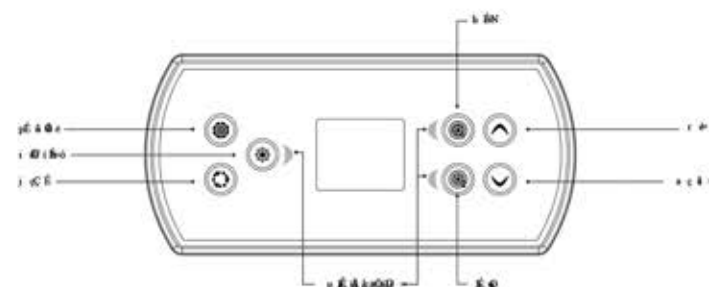
Mode key

Successive presses on the Mode key will give access to control different optional accessories of your spa such as Audio and others. Note that if an accessory is not present in your spa configuration, its menu will not appear. Refer to the following section to get details about the possible accessories and their detailed functionalities. The screen will revert back to the spa mode if no key is pressed for 60 seconds. If you don't have any accessories, Mode key can be used to change your display orientation.

Water temperature

The temperature shown at the top of the screen gives the actual water temperature.

Use the Up and Down buttons to set the desired temperature. The set point will appear in blue at the bottom. After 3 seconds without any change to the set temperature value, the keypad will resume the normal display of messages.



*Functions for keys 1 and 2 will depend on your system's low level configuration.

SPA JETS



Neck / Shoulder Jets

Imagine having your own personal masseuse but in your hot tub, our luxury hydrotherapy neck and shoulder massage jets are fantastic and relieving tension and muscle tightness. Perfect for customers who suffer with neck pain, shoulder pains and headaches. Warm water combined with our jets relaxes your muscles and will leave you feeling refreshed and stress free.



Advanced Ultimate Massagers

A regular foot massage along with reflexology helps in promoting physiological as well as physical health. A foot massage treats pains and aches such as headaches, migraines, neck pain, lower and upper backaches.



Leg / Thigh Jets

It's common that at the end of a long day, leg muscles ache. With our hydrotherapy leg and calf jets you can soothe and relax tired and aching muscles. These jets are perfect for people who are active including cyclists and runners. Calf jets can also help with joint mobilisation, muscle strengthening, maintenance and restoration and improved circulation.

A romantic couple is shown from the chest up, submerged in a hot tub. The woman, on the left, has short reddish-brown hair with bangs and is wearing a dark, patterned halter-neck swimsuit. She is smiling broadly at the man. The man, on the right, has dark hair and a beard, and is also smiling at her. His arm is around her shoulder. The water in the tub is dark and reflects the warm, golden light of the setting or rising sun. In the background, a cityscape is visible, followed by a range of green, hilly mountains under a clear sky. The overall mood is relaxed and intimate.

PLUG & PLAY

MODEL OPTIONS

ARROCITO 13amp

People	3
Seats	1 sitting + 2 loungers
Dimensions	2000mm x 1600mm x 780mm
Weight	200KG/ 1710KG with water
Controls	Gecko In.YJ-2 + K300
LED Lighting	✓
Music	Bluetooth
Ozone	✓
Insulation	✓
Electrical Supply Required	220V/50HZ
Heater	2KW/220-240VAC
Pumps	1 x 3 HP Dual speed
Total Jets	23
Lighting Jets	23



Acrylic colour options



Odyssey



Midnight Canyon

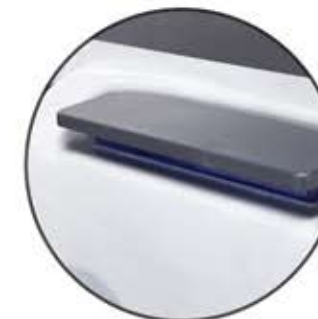


Sterling Silver



Product Warranty

2 years on parts, 1 year labour, 1 year stereo,
5 years structure and 2 years surface.



SANTA CRUZ 13amp

People	6
Seats	5 sitting + 1 loungers
Dimensions	2000mm x 2000mm x 930mm
Weight	460KG/ 1710KG with water
Controls	Gecko In.YJ-2 + K300
LED Lighting	✓
Music	Bluetooth
Ozone	✓
Insulation	✓
Electrical Supply Required	220V/50HZ
Heater	2KW/220-240VAC
Pumps	1 x 3 HP Dual speed
Total Jets	29
Lighting Jets	27



Acrylic colour options



Odyssey



Midnight Canyon



Sterling Silver



Product Warranty

2 years on parts, 1 year labour, 1 year stereo,
5 years structure and 2 years surface.

LA ENTREGA 13amp

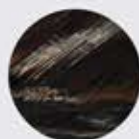
People	5
Seats	3 sitting + 2 loungers
Dimensions	2100mm x 2100mm x 930mm
Weight	460KG/ 1710KG with water
Controls	Gecko In.YJ-2 + K300
LED Lighting	✓
Music	Bluetooth
Ozone	✓
Insulation	✓
Electrical Supply Required	220V/50HZ
Heater	2KW/220-240VAC
Pumps	1 x 3 HP two speed
Total Jets	25
Lighting Jets	23



Acrylic colour options



Odyssey



Midnight Canyon



Sterling Silver



Product Warranty

2 years on parts, 1 year labour, 1 year stereo,
5 years structure and 2 years surface.

A romantic couple is shown from the chest up, submerged in a hot tub. The woman, on the left, has short brown hair and is smiling broadly with her eyes closed. The man, on the right, has dark hair and a beard, and is looking at her with a smile. They are both wearing dark-colored swimwear. The hot tub is filled with water, and the background shows a cityscape and mountains under a clear sky. A semi-transparent white circular graphic is overlaid on the left side of the image, containing the text.

DOUBLE PUMP

MODEL OPTIONS

ZICATELA

People	3
Seats	1 sitting + 2 loungers
Dimensions	2000mm x 1600mm x 780mm
Weight	200KG/ 1710KG with water
Controls	Gecko InY3 + K500
LED Lighting	✓
Music	Bluetooth
Ozone	✓
Insulation	✓
Electrical Supply Required	220V/50HZ
Heater	3KW/220-240VAC
Pumps	2 x 2 HP - 1 Dual speed
Circulation Pump	1 x 0.5 HP
Total Jets	50
Lighting Jets	25



Acrylic colour options



Odyssey



Midnight Canyon



Sterling Silver



Product Warranty

2 years on parts, 1 year labour, 1 year stereo,
5 years structure and 2 years surface.



ESPERANZA

People	6
Seats	5 sitting + 1 loungers
Dimensions	2000mm x 2000mm x 930mm
Weight	460KG/ 1710KG with water
Controls	Gecko InY3 + K500
LED Lighting	✓
Music	Bluetooth
Ozone	✓
Insulation	✓
Electrical Supply Required	220V/50HZ
Heater	3KW/220-240VAC
Pumps	2 x 3 HP
Circulation Pump	1 x 0.5 HP
Total Jets	56
Lighting Jets	37



Acrylic colour options



Odyssey



Midnight Canyon



Sterling Silver



Product Warranty

2 years on parts, 1 year labour, 1 year stereo,
5 years structure and 2 years surface.

LA BOCANA

People	5
Seats	3 sitting + 2 loungers
Dimensions	2100mm x 2100mm x 930mm
Weight	460KG/ 1710KG with water
Controls	Gecko InY3 + K500
LED Lighting	✓
Music	Bluetooth
Ozone	✓
Insulation	✓
Electrical Supply Required	220V/50HZ
Heater	3KW/220-240VAC
Pumps	2 x 3 HP
Circulation Pump	1 x 0.5 HP
Total Jets	61
Lighting Jets	32



Acrylic colour options



Odyssey



Midnight Canyon



Sterling Silver



Product Warranty

2 years on parts, 1 year labour, 1 year stereo,
5 years structure and 2 years surface.

TANGOLUNDA

People	7
Seats	7 sitting
Dimensions	2100mm x 2100mm x 930mm
Weight	460KG/ 1710KG with water
Controls	Gecko InY3 + K500
LED Lighting	✓
Music	Bluetooth
Ozone	✓
Insulation	✓
Electrical Supply Required	220V/50HZ
Heater	3KW/220-240VAC
Pumps	2 x 3 HP
Circulation Pump	1 x 0.5 HP
Total Jets	60
Lighting Jets	47



Acrylic colour options



Odyssey



Midnight Canyon



Sterling Silver



Product Warranty

2 years on parts, 1 year labour, 1 year stereo,
5 years structure and 2 years surface.



CACALUTA

People	6
Seats	5 sitting + 1 lounger
Dimensions	2100mm x 2100mm x 930mm
Weight	460KG/ 1710KG with water
Controls	Gecko InY3 + K500
LED Lighting	✓
Music	Bluetooth
Ozone	✓
Insulation	✓
Electrical Supply Required	220V/50HZ
Heater	3KW/220-240VAC
Pumps	2 x 3 HP
Circulation Pump	1 x 0.5 HP
Total Jets	55
Lighting Jets	35



Acrylic colour options



Odyssey



Midnight Canyon



Sterling Silver

Product Warranty

2 years on parts, 1 year labour, 1 year stereo,
5 years structure and 2 years surface.



BARA DE LA CRUZ

People	4
Seats	2 sitting + 2 loungers
Dimensions	2100mm x 2100mm x 940mm
Weight	370KG/1380KG with water
Controls	Gecko In.YE5 + K1000
LED Lighting	✓
Music	Bluetooth
Ozone	✓
Insulation	✓
Electrical Supply Required	220V/50HZ
Heater	3KW/220-240VAC
Pumps	2 x 2 HP - 1 Dual speed
Circulation Pump	1 x 0.5 HP
Total Jets	51
Lighting Jets	22
Included subwoofer	✓
Aromatherapy	✓



Acrylic colour options



Odyssey



Midnight Canyon



Sterling Silver



Product Warranty

2 years on parts, 1 year labour, 1 year stereo,
5 years structure and 2 years surface.

TRIPLE PUMP

MODEL OPTIONS



CHACHACUAL

People	5
Seats	3 sitting + 2 loungers
Dimensions	2300mm x 2300mm x 940mm
Weight	460KG/ 1710KG with water
Controls	Gecko In.YE5 + K1000
LED Lighting	✓
Music	Bluetooth
Ozone	✓
Insulation	✓
Electrical Supply Required	220V/50HZ
Heater	3KW/220-240VAC
Pumps	3 x 2 HP
Circulation Pump	1 x 0.5 HP
Total Jets	73
Lighting Jets	35
Included subwoofer	✓
Aromatherapy	✓



Acrylic colour options



Odyssey



Midnight Canyon



Sterling Silver



Product Warranty

2 years on parts, 1 year labour, 1 year stereo,
5 years structure and 2 years surface.

SAN AUGUSTIN

People	6
Seats	5 sitting + 1 loungers
Dimensions	2300mm x 2200mm x 940mm
Weight	405KG/ 1630KG with water
Controls	Gecko In.YE5 + K1000
LED Lighting	✓
Music	Bluetooth
Ozone	✓
Insulation	✓
Electrical Supply Required	220V/50HZ
Heater	3KW/220-240VAC
Pumps	3 x 2 HP
Circulation Pump	1 x 0.5 HP
Total Jets	64
Lighting Jets	36
Included subwoofer	✓
Aromatherapy	✓



Acrylic colour options



Odyssey



Midnight Canyon



Sterling Silver



Product Warranty

2 years on parts, 1 year labour, 1 year stereo,
5 years structure and 2 years surface.



VISIT OUR SHOWROOMS:



Bridgend
Pyle Garden Village
2 Heol Mostyn
Pyle
CF33 6BJ

01656 670345



Pembrokeshire
Vine Road
Johnston
Haverfordwest
SA62 3NY

01437 723320



Swansea
Unit 1 Penrice Court
Fendrod Business Park
Enterprise Park
SA6 8QW

01792 798475



WWW.CASTLEHOTTUBS.CO.UK

