



Twilight
SERIES®

YOU CAN NEVER HAVE
TOO MUCH GOOD.



MADE IN
THE USA

RELAX. IT'S
Master
Spas®





There is no better time than Twilight. Amid the busyness and stress of daily life, there is a break in the day. It's the time where you can find the space to make time for yourself. Whether you want to soak in the quiet or reconnect with loved ones — embrace the opportunity to focus on total well-being. The beauty of owning a Twilight Series® hot tub is that you rule the best part of your day.

You can never have too much good.

Designed to restore body and spirit, the Twilight Series' exclusive features and indulgent design create an unrivaled spa experience. The innovative water management system makes spa maintenance and care effortless. Enjoy clean, clear, fresh-smelling water with less work — year-round, in any climate.

Discover more about the Twilight Series because you can never have too many good things in life.

Twilight
SERIES®
BY MASTER SPAS





STRESSRELIEF NECK AND SHOULDER SEAT™

Strategically placed jets and magnets provide the ultimate tension relieving therapy.



MASTER BLASTER® FOOT THERAPY SYSTEM

Treat your feet to soothing, massaging jet action.



HYDROTHERAPY JETS

From the full-body massage, to concentrated neck and shoulder relief, to lounge and cool-down seats, you get the spa experience that's just right for you.

Your whole being will say “Ahh.”

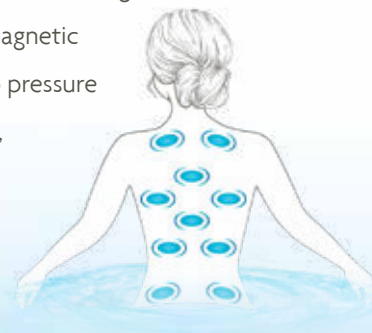
Your perfect spa experience awaits with a Twilight Series hot tub. Indulge in a full-body massage or relieve neck and shoulder tension. Relax into a contoured lounge seat or take a moment in a cool-down seat. With adjustable jets and easy-to-use temperature settings, you can direct the pressure and relieve life's stresses.

Our StressRelief Neck and Shoulder Seat™ features a ledge with specially designed jets that are positioned downward — putting your neck and shoulders under the jets for the ultimate tension-relieving massage. Our exclusive Master Blaster® Foot Therapy System uses dual jet clusters with 28 total individual nozzles designed to rejuvenate your body through an encompassing foot massage. When you feel the stress-relieving power of the hydrotherapy jets in each ergonomically designed seat, you'll wonder how you lived without it.

MAGNETIC THERAPY

Our exclusive Master Force™ Bio-Magnetic Therapy System offers the benefits of magnetic therapy in the comfort of a hot tub. Magnetic therapy has been used for centuries to help relieve pain, improve circulation, reduce swelling, and alleviate stiffness. Today, more and more doctors and physical therapists are using magnetic therapy for the treatment of back problems, arthritis, and sports injuries.

That's why Master Spas, after extensive research and development, chose to combine the proven benefits of hydrotherapy with the pain-relieving comfort of bio-magnetic therapy. Our Master Force™ Bio-Magnetic Therapy System applies strategically placed magnets to two pressure points behind the neck and eight throughout the shoulders, back, and seat areas in our exclusive StressRelief Neck and Shoulder Seat.





LOUNGE SEATING
Ergonomically designed to fit the contours of your body, our lounge seat will wrap you in ultimate therapeutic comfort.



SOAK IN THE WARMTH
In a matter of minutes, your tension will disappear.



STRESSRELIEF NECK AND SHOULDER SEAT™



Music, laughter, family, and friends

A Twilight Series hot tub is not only remarkable for relaxation and hydrotherapy but it is the perfect setting to bring together family and friends. Since everything about this hot tub is delightfully stress-free, you'll have peace of mind when you're entertaining. Controls offer one-touch digital ease so you can truly relax while the hot tub does all the work. The Orion Light System™ illuminates the cascading waterfall and topside controls. Dream Lighting* adds soft streams of light to accent the exterior corners of your hot tub at night. The Fusion Air Sound System* provides the music and sets the tone of your occasion. With a Twilight Series hot tub, you can live in the moment amid quality and good times.



One of my favorite things about purchasing this hot tub is that I have been hanging out more with my kids—I have two 13-year olds and a nine-year-old. So a lot of times, when I'm using it at night, we'll have these conversations about life that I don't think we would be having if we didn't have the opportunity to shut off all the screens. So that's been a really cool thing about it.

— Marcy L., Ayer, MA

* Optional





FUSION AIR SOUND SYSTEM
Two interior water resistant speakers and a subwoofer maximize the sound quality of your music. This optional system comes with a water-resistant remote and connects quickly and easily to your phone or other device via Bluetooth, allowing you to stream your favorite station or playlist.



ORION LIGHT SYSTEM™
LED lights beautifully illuminate the water as well as the cascade waterfall and topside controls.



Clean, pure water



At Master Spas, we want you to spend more time enjoying our products and less time taking care of them. That's why we developed the exclusive and patent-pending EcoPur® Charge Master Core Technology water purification system – a filtration system that makes maintaining your hot tub's water easier. Using the same multi-stage filtration techniques as Mother Nature, EcoPur Charge relies on a unique blend of copper and zinc, which eliminates most microorganisms and removes heavy metals from the water. This results in sparkling water that feels softer and doesn't have the harsh chemical smells associated with common systems.



Mast3rPur™ Water Management System*

The synergistic blend of three proven natural sanitizers provides water quality and care not found in any other hot tub, including those with salt systems. The Mast3rPur Water Management System dramatically reduces harsh chemical consumption, like chlorine, while removing many heavy metals and chloramines for water that looks crystal clear, smells fresh, and has a silky feel. This innovative, exclusive benefit is due to the power of three elements:



When absorbed in water, **ozone** kills pathogens and microorganisms, destroys organics, and oxidizes non-organic contaminants.



When germicidal **UV-C light** is exposed to water it inactivates microorganisms and breaks down chloramines.



The unique combination of **copper** and **zinc** in the patent-pending EcoPur Charge filters creates an electro-chemical reaction to eliminate many microorganisms and remove heavy metals such as lead and mercury.

Each of the three elements are proven effective water management tools but when they are combined, they are dramatically more effective because of Advanced Oxidation Process (AOP). AOP is superior to other systems because it produces powerful hydroxyl radicals, which maximize disinfection and reduce chloramines fast and effectively. Clean, clear, fresh smelling and silkier water is available now with less work... another innovative, exclusive benefit only available through Master Spas.**

QuietFlo Water Care System™*

What if you could fill your hot tub with fresh water every time you use it? With the QuietFlo Water Care System, you can. This amazing system moves water through your EcoPur Charge filtration system, up to 25 gallons per minute, 24/7. This means that a typical 7-foot hot tub can have complete filtration every 13 minutes.

* Optional

** The Mast3rPur option is only available on hot tubs equipped with the QuietFlo Water Care System.



MAST3RPUR™

A synergistic blend of three proven natural water sanitizers combine to make a dramatically more effective water management system. The blend results in clean, clear, fresh smelling, and silkier water.



ECOPUR® CHARGE

This patent-pending filtration system takes the work out of maintaining your hot tub. It relies on a unique blend of copper and zinc that creates an electrochemical reaction to eliminate many microorganisms and remove heavy metals.



UV-C LIGHT

When germicidal UV-C light is exposed to water it inactivates microorganisms and breaks down chloramines.



RELAX

Your Twilight is a superior energy-efficient hot tub, and that means savings for you and your monthly utility bill.



A THERMAL BARRIER

Environmentally friendly foam insulation provides a consistent, comfortable temperature inside the hot tub, while cold air is kept outside.



EXCEPTIONAL COVERS

Safety, protection, and energy efficiency are all key components of our exclusive UL certified covers. Constructed using top grade marine vinyl with UV protection and high density foam, these covers lock in heat and last a long time.





Easy to own, easy to enjoy

Energy Efficient

All of our hot tubs are built to be used year-round in any climate. In fact, our environmentally friendly foam insulation makes Twilight Series hot tubs by Master Spas among the most energy-efficient hot tubs in the industry.

By expanding to tightly seal and secure all areas under your hot tub, our insulation:

- Prevents heat loss
- Retains its shape and efficiency for the life of the product
- Resists mold and mildew
- Reduces the noise of your spa
- Produces no ozone harming off-gas, environmentally safe

Every hot tub is built to not only meet but to exceed stringent energy-efficiency regulations. All resulting in what really matters — a superior spa experience and savings for you and your monthly utility bill.

WELCOME WINTER

Twilight Series hot tubs are among the most energy-efficient hot tubs in the industry.



Premium Options



FUSION AIR SOUND SYSTEM

Two interior, water-resistant speakers and a subwoofer maximize the sound quality of your music. The system connects quickly and easily to your phone or other device via Bluetooth, allowing you to

stream your favorite station or playlist. With this system, you can even stream shows or movies from the comfort of your hot tub using your tablet in a waterproof case, and our heavy-duty suction stand* mounted to the edge of your hot tub—for a “cinematic” experience.

WI-FI MODULE Enables you to remotely control the operations of your spa through a Wi-Fi spa control app. You can set the lighting, water temperature, and massage pumps to be ready when you are.

QUIETFLO WATER CARE SYSTEM™ Our advanced energy-efficient circulation pump moves water through your EcoPur® Charge filtration system up to 25 gallons per minute, 24/7.

MAST3RPUR™ WATER MANAGEMENT SYSTEM A synergistic blend of three proven natural water sanitizers combine to make a dramatically more effective water management system. The blend results in clean, clear, fresh smelling, and silkier water. The Mast3rPur™ option is only available on hot tubs equipped with the QuietFlo Water Care System.



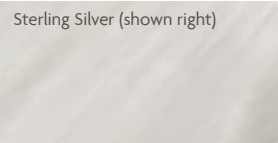
DREAM LIGHTING Beautiful soft streams of light accent the exterior corners of your hot tub at night.**

POLYMER BASE Our Vac-Formed ABS Pan Bottom is a premium, high-density polymer base, designed to keep heat in and the elements out.

Your Colors

Complement the color of your spa with the skirting of your choice for a distinctive combination that’s truly your own.

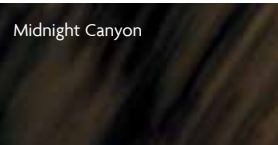
SHELL OPTIONS



Sterling Silver (shown right)



Tuscan Sun



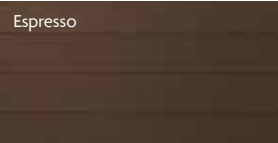
Midnight Canyon

Skirting

DuraMaster Premium™ skirting is made of high-impact, weatherable polymer. This skirting has virtually no fading and is so durable, that it comes with a lifetime warranty. For ultimate luxury, choose the convincing DreamStone™ synthetic skirting, with the look of contemporary stacked stone and chestnut-stained barrel wood corners.

SKIRTING OPTIONS

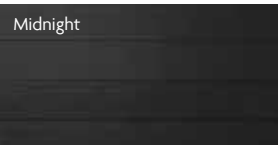
DURAMASTER PREMIUM™



Espresso



Graphite Grey

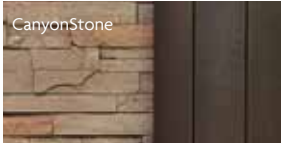


Midnight

DREAMSTONE™ (optional for 7ft and 8ft hot tubs only)



AshStone



CanyonStone

*Optional **Dream Lighting is not available with DreamStone Skirting.





TWILIGHT SERIES 8.2



Dimensions:	94"x 94"x 38" (239 cm x 239 cm x 97 cm)
Weight (Dry/Full):	1,065 lbs (483 kg) / 5,345 lbs (2 424 kg)
Gallons:	380 (1 438 L)
Power Requirements:	240 V / 50 Amp
Seating Capacity:	6
Stainless Steel Jets:	44 Jets (2 Master Blasters®)
Pumps:	2
Water Features:	3
Filtration:	EcoPur® Charge
LED Lighting:	Orion Light System™
Exclusive Features:	StressRelief Neck and Shoulder Seat™ Master Force™ Bio-Magnetic Therapy System
Premium Options:	Fusion Air Sound System Wi-Fi Module QuietFlo Water Care System™ Mast3rPur™ Water Management System Dream Lighting Vac-formed ABS Pan Bottom
Listing Number:	5700



TWILIGHT SERIES 8.25



Dimensions:	94"x 94"x 38" (239 cm x 239 cm x 97 cm)
Weight (Dry/Full):	1,100 lbs (499 kg) / 5,690 lbs (2 581 kg)
Gallons:	395 (1 495 L)
Power Requirements:	240 V / 50 Amp
Seating Capacity:	7
Stainless Steel Jets:	47 Jets (2 Master Blasters®)
Pumps:	2
Water Features:	2
Filtration:	EcoPur® Charge
LED Lighting:	Orion Light System™
Exclusive Features:	StressRelief Neck and Shoulder Seat™ Master Force™ Bio-Magnetic Therapy System
Premium Options:	Fusion Air Sound System Wi-Fi Module QuietFlo Water Care System™ Mast3rPur™ Water Management System Dream Lighting Vac-formed ABS Pan Bottom
Listing Number:	7700







"I have really enjoyed my TS 7.2 tub. The delivery was smooth, they took my old hot tub as well which was great. Getting it all set up was easy using all their guides and instructions. I am very happy with my purchase and strongly feel that it was a good investment and will hold up to frequent use."

— Kevin C., Indianapolis, IN



TWILIGHT SERIES 7.2		
Dimensions:	84"x 84"x 38" (214 cm x 214 cm x 97 cm)	
Weight (Dry/Full):	897 lbs (407 kg) / 4,555 lbs (2 066 kg)	
Gallons:	305 (1 155 L)	
Power Requirements:	240 V / 50 Amp	
Seating Capacity:	6	
Stainless Steel Jets:	36 Jets (2 Master Blasters®)	
Pumps:	2	
Water Features:	2	
Filtration:	EcoPur® Charge	
LED Lighting:	Orion Light System™	
Exclusive Features:	StressRelief Neck and Shoulder Seat™ Master Force™ Bio-Magnetic Therapy System	
Premium Options:	Fusion Air Sound System Wi-Fi Module QuietFlo Water Care System™ Mast3rPur™ Water Management System Dream Lighting Vac-formed ABS Pan Bottom	
Listing Number:	5500	



TWILIGHT SERIES 7.25		
Dimensions:	84"x 84"x 38" (214 cm x 214 cm x 97 cm)	
Weight (Dry/Full):	935 lbs (424 kg) / 4,775 lbs (2 166 kg)	
Gallons:	305 (1 155 L)	
Power Requirements:	240 V / 50 Amp	
Seating Capacity:	7	
Stainless Steel Jets:	36 Jets (2 Master Blasters®)	
Pumps:	2	
Water Features	1	
Filtration:	EcoPur® Charge	
LED Lighting:	Orion Light System™	
Exclusive Features:	StressRelief Neck and Shoulder Seat™ Master Force™ Bio-Magnetic Therapy System	
Premium Options:	Fusion Air Sound System Wi-Fi Module QuietFlo Water Care System™ Mast3rPur™ Water Management System Dream Lighting Vac-formed ABS Pan Bottom	
Listing Number:	6400	





TWILIGHT SERIES 67.25



Dimensions:	70"x 84"x 34" (178 cm x 214 cm x 87 cm)
Weight (Dry/Full):	760 lbs (345 kg) / 3,730 lbs (1 692 kg)
Gallons:	245 (927 L)
Power Requirements:	240 V / 50 Amp
Seating Capacity:	5
Stainless Steel Jets:	28 Jets (1 Master Blaster®)
Pumps:	2
Water Features:	1
Filtration:	EcoPur® Charge
LED Lighting:	Orion Light System™
Exclusive Features:	StressRelief Neck and Shoulder Seat™ Master Force™ Bio-Magnetic Therapy System
Premium Options:	Fusion Air Sound System Wi-Fi Module QuietFlo Water Care System™ Mast3rPur™ Water Management System Dream Lighting
Listing Number:	8000



TWILIGHT SERIES 6.2



Dimensions:	78"x 78"x 34" (199 cm x 199 cm x 87 cm)
Weight (Dry/Full):	840 lbs (381 kg) / 3,850 lbs (1 746 kg)
Gallons:	250 (946 L)
Power Requirements:	240 V / 50 Amp
Seating Capacity:	5
Stainless Steel Jets:	30 Jets (1 Master Blaster®)
Pumps:	2
Water Features:	2
Filtration:	EcoPur® Charge
LED Lighting:	Orion Light System™
Exclusive Features:	StressRelief Neck and Shoulder Seat™ Master Force™ Bio-Magnetic Therapy System
Premium Options:	Fusion Air Sound System Wi-Fi Module QuietFlo Water Care System™ Mast3rPur™ Water Management System Dream Lighting
Listing Number:	5300





TWILIGHT SERIES 240



Dimensions:	78"x 78"x 34" (199 cm x 199 cm x 87 cm)
Weight (Dry/Full):	715 lbs (324 kg) / 2,980 lbs (1 352 kg)
Gallons:	205 (776 L)
Power Requirements:	240 V / 50 Amp
Seating Capacity:	3
Stainless Steel Jets:	26 Jets (1 Master Blaster®)
Pumps:	2
Water Features:	1
Filtration:	EcoPur® Charge
LED Lighting:	Orion Light System™
Exclusive Features:	StressRelief Neck and Shoulder Seat™ Master Force™ Bio-Magnetic Therapy System
Premium Options:	Fusion Air Sound System Wi-Fi Module QuietFlo Water Care System™ Mast3rPur™ Water Management System Dream Lighting
Listing Number:	6200



"I love my new hot tub! It's very therapeutic. It soothes all my aches and pains. I would highly recommend Master Spas' Twilight Series. Each day I look forward to coming home from work and relaxing in my hot tub. I have recently gotten in the habit of starting my day each morning with a half-hour soak. I honestly don't think I could live without it."

— Paul R., Cedarburg, WI



YOU CAN NEVER HAVE TOO MUCH GOOD

MasterSpas.com

Twilight
SERIES®



MASTER SPAS CARES FOR KIDS

Master Spas and our dealers were part of building a new elementary school in 2013, and a new high school in 2018 for the NAZ Children's Centre in Rose Hall, Jamaica. This specialized Christian school offers multiple learning strategies to accommodate the neurodiversity of their student body. With every Master Spas swim spa sold, a donation will be made to the NAZ Children's Centre Scholarship Fund.



In our hometown, we are honored to partner with the Crossing School of Business and Entrepreneurship, a faith-based high school that turns at-risk youth into tomorrow's leaders. Master Spas provides operational space for vocational training and a micro business.



MASTER SPAS CARES FOR CURES

Master Spas is pleased and proud to assist two foundations dedicated to finding and funding the cures for life-hindering diseases.

Master Spas has partnered with the Lupus Foundation of America since 2002 to raise awareness and fund research toward finding a cure for this debilitating disease that affects more than 1.5 million Americans.



Master Spas has joined forces with the Vera Bradley Foundation for Breast Cancer to eradicate breast cancer, a life-threatening disease, by providing financial support for research and research-related projects.



For more information, visit MasterSpas.com/cares



TWILIGHT SERIES HOT TUBS ARE MANUFACTURED BY MASTER SPAS, AN AWARD WINNING COMPANY YOU CAN TRUST.



Master Spas® reserves the right to change product specifications or features without notice. Master Spas is a manufacturer of spas and related products, and we stand behind every product we produce pursuant to those representations which are stated in our written limited warranty. Your dealer is an independent businessperson or company and not an employee or agent of Master Spas, LLC. We cannot and do not accept any responsibility or liability for any other representations, statements or contracts made by any dealer beyond the provisions of our written limited warranty. Master Spas, Twilight Series, Master Blaster, and EcoPur are registered trademarks of Master Spas, LLC. Patents: masterspas.com/patents

LITTS2021 ©2021 Master Spas, LLC 6927 Lincoln Parkway, Fort Wayne Indiana 46804 260 436 9100 sales@masterspas.com masterspas.com @MasterSpas

